

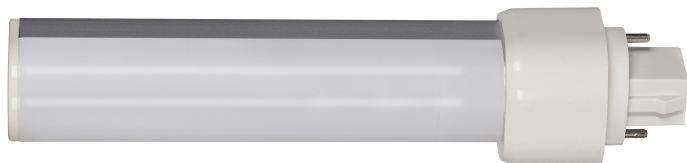


Project/Job Name:

Location:

Fixture Type:

Notes:



S9857 - 9 Watt LED PL 2-Pin; 5000K; 900 Lumens; G24d base; 50000 Average rated hours; 120 Deg. Beam Angle; Type A; Ballast dependent



ELECTRICAL

Technology:	LED
Watts:	9W
Volts:	Ballast Dependent
Lumens:	900L
CRI:	80+
CCT (Kelvins):	5000K - Natural Light
Beam Spread :	120
Hours Rated:	50000
Dimmable:	Non-Dimmable -
Fluorescent Equivalent :	26W
Operating Temperature :	-20C (-4F) to +45C (+113F)
Ballasting Requirements :	Ballast required, check compatibility
Lamp Ballast Type A/B/C :	Type A
Operating Position:	Horizontal
Power Factor :	0.73
Light Source:	LED
Voltage Type:	Ballast Dependent
Warranty:	5-Years

PACKAGING

Each UPC:	045923098574
Each Quantity:	1
Each Dimensions:	1.50 x 1.50 x 6.80

INFO

ROI Category:	Four Pin-Base Replacement Lamps for CFL
---------------	---

PHYSICAL

Base:	G24d (2-Pin)
Shape:	PL
Finish:	Frost
Dimensions (In.):	MOL: 6.63 - MOD: 1.09
Weight (Lbs.):	0.18
Material:	Aluminum / Plastic
Housing Color:	White

COMPLIANCE

Safety Listing:	cULus - Classified
Location Rating:	Damp
DLC Approved:	No
BAA Compliant:	No
NOM Certificate No.:	LOG2159ENC000558!LOG2159ENC000558-1
NOM Expiration Date:	7/15/2022
Enclosure Rating:	Enclosed Rated Lamp
Rated For Enclosed Fixture:	Yes
FCC Compliant:	Yes
RoHS Compliant:	Yes
Restrictions:	No Restrictions