

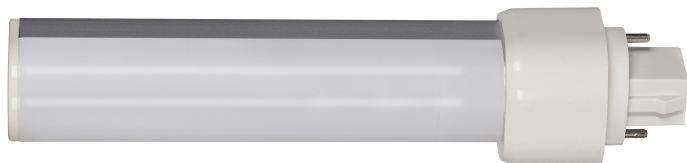


Project/Job Name:

Location:

Fixture Type:

Notes:



**S8534** - 9 Watt LED PL 2-Pin; 5000K;1000 Lumens; G24d base;  
50000 Average rated hours; 120 Deg. Beam Angle; Horizontal; Type  
B; Ballast Bypass



### ELECTRICAL

Technology:	LED
Watts:	9W
Volts:	120V-277V
Lumens:	1000L
CRI:	80+
CCT (Kelvins):	5000K - Natural Light
Beam Spread :	120
Hours Rated:	50000
Dimmable:	Non-Dimmable -
Fluorescent Equivalent :	18W/26W
Operating Temperature :	-20C (-4F) to +45C (+113F)
Ballasting Requirements :	Ballast Bypass- Direct wire only 100V-277V
Lamp Ballast Type A/B/C :	Type B
Operating Position:	Horizontal
Power Factor :	0.99
Light Source:	LED
Voltage Type:	AC Only; Range Voltage
Warranty:	5-Years

### PACKAGING

Each UPC:	045923085345
Each Quantity:	1
Each Dimensions:	1.50 x 1.50 x 6.77

### INFO

Installation Note:	2-pin LED lamps work in both 2-pin (magnetic) and 4-pin (electronic) sockets.
ROI Category:	Four Pin-Base Replacement Lamps for CFL

### PHYSICAL

Base:	G24d (2-Pin)
Shape:	PL
Finish:	Frost
Dimensions (In.):	MOL: 6.63 - MOD: 1.09
Weight (Lbs.):	0.19
Housing Color:	White

### COMPLIANCE




Safety Listing:	cULus - Classified; cULus - Certified
Location Rating:	Damp
DLC Approved:	No
BAA Compliant:	No
NOM Certificate No.:	LOG2159ENC000558!LOG2159E NC000558-1
NOM Expiration Date:	7/15/2022
Enclosure Rating:	Enclosed Rated Lamp
Rated For Enclosed Fixture:	Yes
FCC Compliant:	Yes
RoHS Compliant:	Yes
Restrictions:	No Restrictions



**S8534** - 9 Watt LED PL 2-Pin; 5000K;1000 Lumens; G24d base;  
50000 Average rated hours; 120 Deg. Beam Angle; Horizontal; Type  
B; Ballast Bypass

ACCESSORIES

---

	<b>80-973</b>	Emergency Driver Enclosure; For use with S8000 and S8002
	<b>S8000</b>	5 Watt LED Emergency Driver; 120-277 Volts
	<b>S8002</b>	10 Watt LED Emergency Driver; 120-277 Volt

---