

# ANTHOS

## FR46962UB-LL

### SMALL SEMI-FLUSH MOUNT

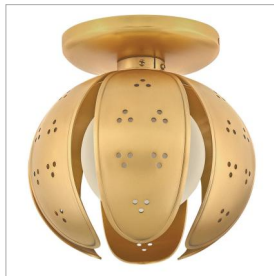
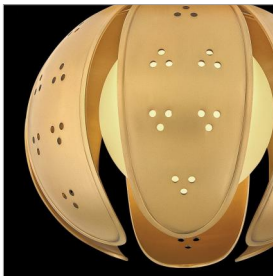
A work of luminary art, Anthos elevates its floral-inspired form with alluring illumination. Raised edge details and distinct perforations accentuate each blossom crafted from solid unlacquered brass petals. Radiant LED lamps enveloped by blown etched opal glass transform the surrounding space with a captivating interplay of light and shadow.

DETAILS	
FINISH:	Unlacquered Brass
MATERIAL:	Brass
GLASS:	Etched Opal
DIMMABLE:	YES - CL TYPE DIMMER (SSL7A)

DIMENSIONS	
WIDTH:	9"
HEIGHT:	9.3"
WEIGHT:	7.8lb
BACK PLATE:	6.5" Dia.
EXTENSION:	4.5"
TOP TO OUTLET:	4.5"

LIGHT SOURCE	
LIGHT SOURCE:	Socketed
WATTAGE:	1-5w G9 LED *Included
VOLTAGE:	120v

SHIPPING	
CARTON LENGTH:	19.3
CARTON WIDTH:	11.5
CARTON HEIGHT:	12.3
CARTON WEIGHT:	10



#### PRODUCT DETAILS:

- This fixture can be mounted horizontally
- Damp Rated
- Bold silhouette with dramatic details creates a modern statement
- LED Bulbs carry a 3-year limited warranty
- This fixture can be mounted vertically
- Invisimount hardware is hidden on the backplate for a clean silhouette

# HINKLEY

HINKLEY  
33000 Pin Oak Parkway  
Avon Lake, OH 44012

PHONE: (440) 653-5500  
Toll Free: 1 (800) 446-5539

[hinkley.com](http://hinkley.com)