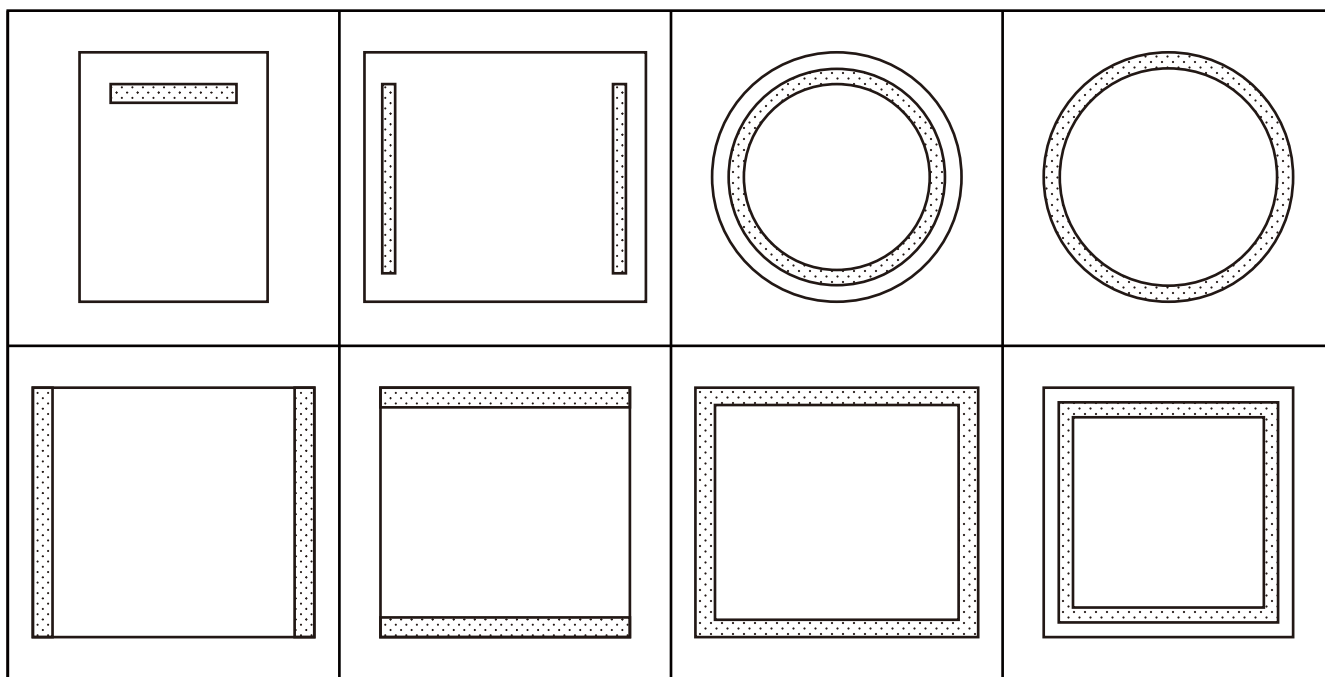


INSTALLATION INSTRUCTIONS

Apply to the below style of LED Mirrors Light



(* Pictures are for reference only, the actual product shall prevail.)

Please read carefully and save these instructions.

Don't discard any of the packaging until you are sure that you have all of the parts and the fittings.

Make sure the main power must be cut off before installation.

IMPORTANT

- ◆ This product contains glass parts. Care must be taken when fitting or handling these parts to prevent personal injury or damage to the products; if the glass is broken, please stop using it and replace it from agent or manufacturer.
- ◆ Ensure the mounting surface is dry and strong enough to bear four times the weight of fixture for the safe fitting of this fixture;
- ◆ Care must be taken before drilling fixing holes to avoid any existing wiring or pipe work that may be concealed.

INSTALLATION

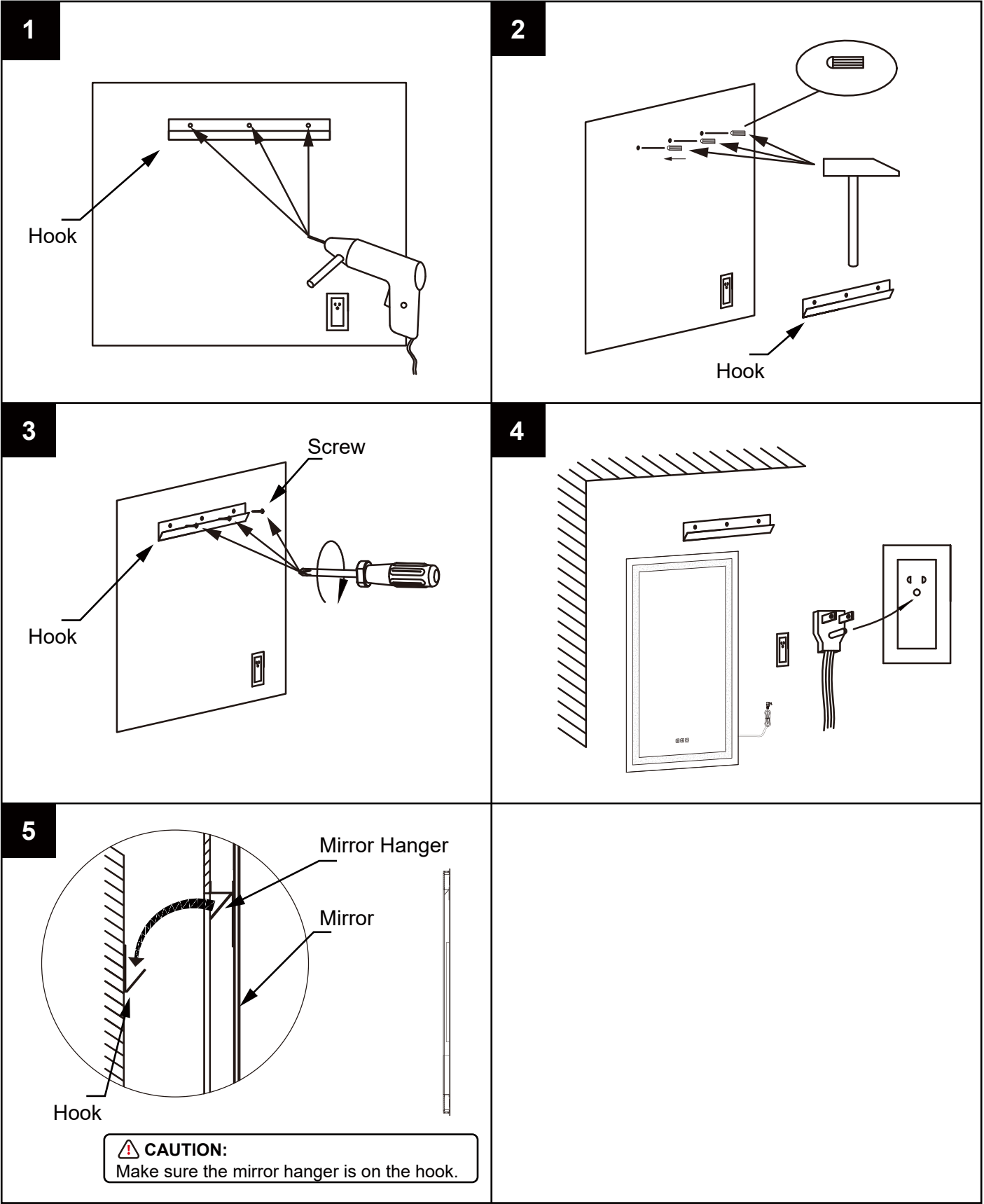
Please refer the installation diagram on the back of the page.

- 1) Place Hook against the wall and mark the suitable position of the screw holes through the Hook on the wall ensuring the Hook is level. Drill the holes and put in three wall plugs. (See Pic. 1, 2)
- 2) Screw the Hook to the wall with the mounting screws supplied. And ensure the Hook firmly against the mounting surface. (See Pic. 3);
- 3) About the wire connection: There are two ways to connect the circuit for the mirror.
Connection way ①: Plug the 3-pin plug in the socket on the wall. (See Pic. 4)
Connection way ②: Connect the mirror wire with wall switch wire via connector.
(See Power Connection Instruction)
- 4) Hang the mirror to the Hook. (**Make sure the mirror hanger is on the hook!**) (See Pic. 5);

MAINTENANCE

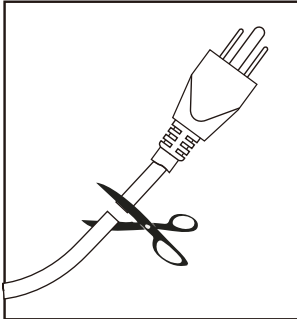
Wipe clean with a soft damp cloth. Never use abrasives or chemical cleaners as these could damage the finish.

INSTALLATION DIAGRAM



POWER CONNECTION INSTRUCTION

The mirror comes with a power cable that can be directly plugged into the switch for convenient use. It can also be hardwired by cutting off the plug and control the ON/OFF of power via the wall switch.



Warning:

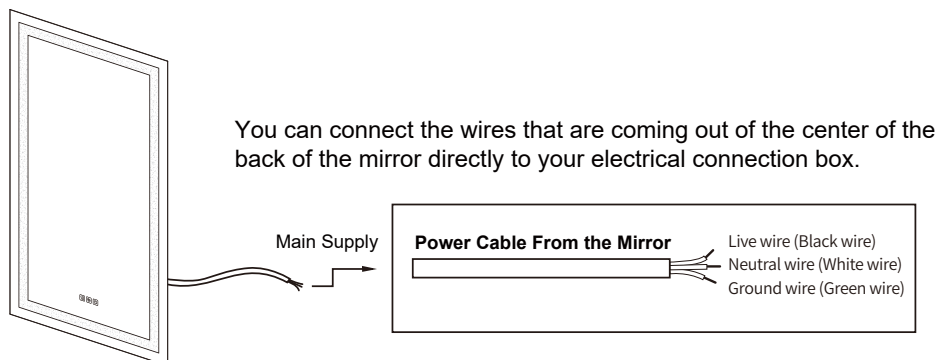
Removing the plug connector will invalidate your product warranty.

If you would like to test the product function prior to installation, please test the product in any standard plug socket.

Before you start the installation, please ensure that:

- the wall where the product is being installed is able to support the weight of the product
- the main electrical supply has been powered off to complete installation

- ◆ Green=GROUND wire connect to the ground wire in your box, or to the box as a ground.
- ◆ White=Neutral wire connect to the White Neutral wire in your box.
- ◆ Black=LIVE wire connect to the Black LIVE wire in your box.



OPERATION INSTRUCTION



Short touch to turn ON and OFF for the defogger function.
Automatic turn off after 1 hour.



Short touch to adjust the colour temperature:
3000K (Warm), 4000K (Neutral), 5000K (Cool).



Short touch: ON and OFF
Press and hold: Dimmable