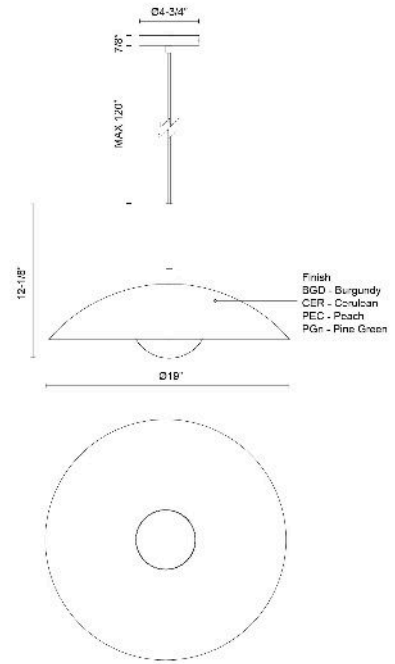


## Regent 19-in Pendant

Model	Bulbs (not included)	Wattage (or equivalent)
<b>PD56019</b> PD56019-BGD PD56019-CER PD56019-PEC PD56019-PGN	1 x E26	60W

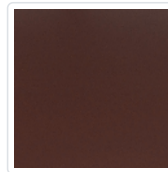


The Regent collection offers a refined blend of timeless design and modern color options, featuring a curated palette of neutral undertones. Its classic wide dome shade, paired with a softly glowing opal diffuser, exudes elegance while maintaining a fresh, contemporary vibe. Regent's versatile style adds a subtle yet impactful pop of color to any room.

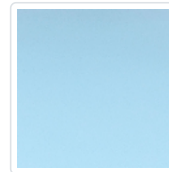
### SPECIFICATION DETAILS

Fixture Dimensions	D19" x H12-1/8"
Canopy Dimensions	D4-3/4" x H7/8"
Minimum Hang Height	15"
Location	Dry
Glass Details	Opal Glass
Illumination Direction	Down
Light Source/Life	Socket
Material	Steel, Glass
Sloped Ceiling Adaptable	Yes
Shade Details	Steel Shade
Wire Length	120"
Wire Style	Color Matching Braided Wire
Compliance	<b>UL Certified:</b> Yes

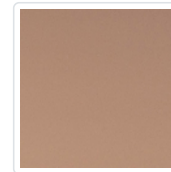
### FINISHES



Burgundy  
(BGD)



Cerulean  
(CER)



Peach  
(PEC)



Pine Green  
(PGN)

\* For custom options, contact customer service.

\* For warranty information, please visit [www.kuzcolighting.com/warranty](http://www.kuzcolighting.com/warranty)

[WWW.KUZCOLIGHTING.COM](http://WWW.KUZCOLIGHTING.COM)

USA: 3035 E. LONE MOUNTAIN ROAD - LAS VEGAS, NV 89081

CANADA: 19054 28TH AVENUE - SURREY, BC V3Z 6M3