

## Elixir 22-in Chandelier

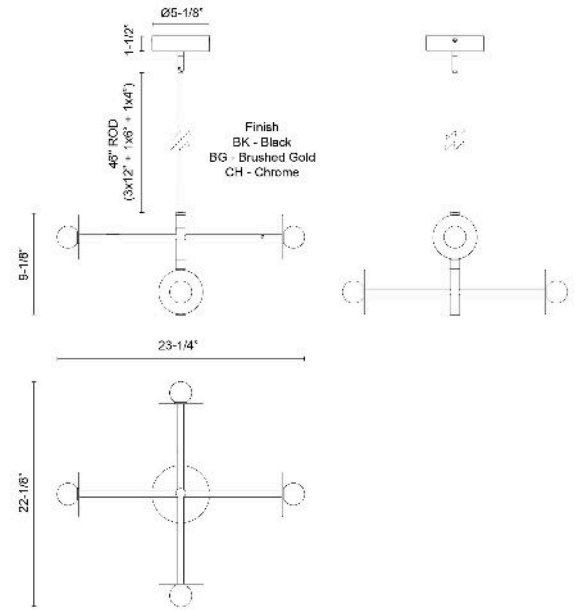
Model	Color Temperature	Wattage	Voltage	Total Lumens	Delivered Lumens	Dimmer Support (Optional, Not Included)
<b>CH15504-UNV</b> CH15504-BG-UNV CH15504-BK-UNV CH15504-CH-UNV	3000K	13W	120-277V	1055lm	780lm* (BG) 710lm* (BK) 850lm* (CH)	TRIAC/ELV



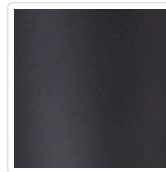
The Elixir collection combines opal glass globes with bold modern disks in effortlessly clean, striking forms. With its blend of organic shapes and minimal design, Elixir offers versatile configurations. Elixir can complement any aesthetic, from contemporary to transitional.

### SPECIFICATION DETAILS

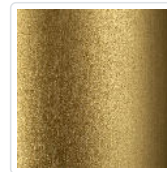
Fixture Dimensions	L23-1/4" x W22-1/8" x H9-1/8"
Canopy Dimensions	D5-1/8" x H1-1/2"
Minimum Hang Height	18"
Location	Dry
Dimming Range	100% - 10%
Glass Details	Opal Glass
Illumination Direction	Omni-directional
Light Source/Life	LED (50,000 hours) 90CRI
Material	Steel, Glass
Sloped Ceiling Adaptable	Yes, 45 Deg
Rod Length	46" Max (3x12" + 1x6" + 1x4")
Shade Details	Steel Shade
Wire Length	72"
Compliance	<b>ETL Certified:</b> Yes <b>CEC Title 24:</b> Yes



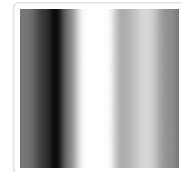
### FINISHES



Black  
(BK)



Brushed Gold  
(BG)



Chrome  
(CH)

\* For custom options, contact customer service.

\* For warranty information, please visit [www.kuzcolighting.com/warranty](http://www.kuzcolighting.com/warranty)

[WWW.KUZCOLIGHTING.COM](http://WWW.KUZCOLIGHTING.COM)

USA: 3035 E. LONE MOUNTAIN ROAD - LAS VEGAS, NV 89081

CANADA: 19054 28TH AVENUE - SURREY, BC V3Z 6M3

© 2024 KUZCO LIGHTING. ALL RIGHTS RESERVED

20241210

Kuzco Lighting reserves the right to modify the design of our products at any time, as part of our ongoing commitment to continuous improvement.