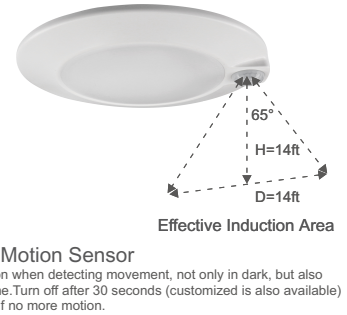
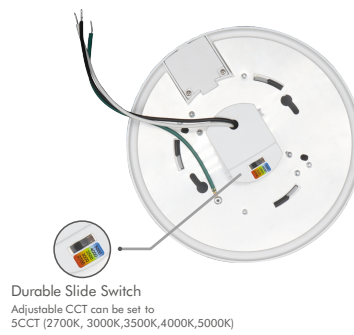
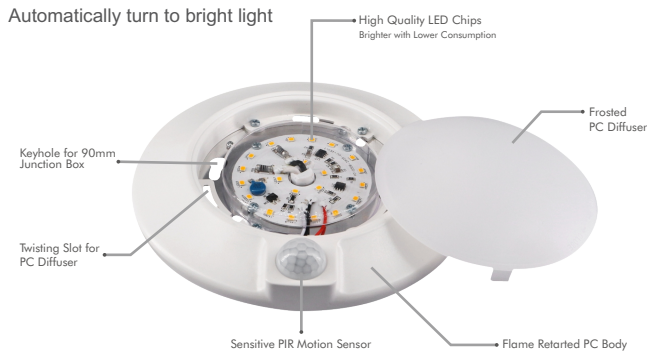
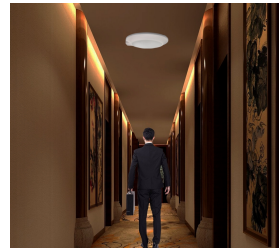


6" LED Closet Lights with PIR Motion Sensor

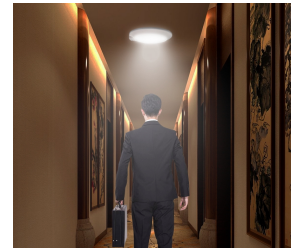


Features

- When motion is detected, it automatically turning lights ON and turns the lights off after 30 seconds
- Made of durable aluminum body with PC diffuser, minimizing signal interference
- The light features a 15W LED module, making it the energy efficient, popular alternative to incandescent and CFL fixtures
- The light incorporates today's most wanted features and meet NFPA 70, NEC Section 410.16 C(1) requirements
- It is easy to install with keyholes for multiple ceiling box configurations
- Design for indoor use only
- 5-color field selectable CCT - 2700K, 3000K, 3500K, 4000K, 5000K



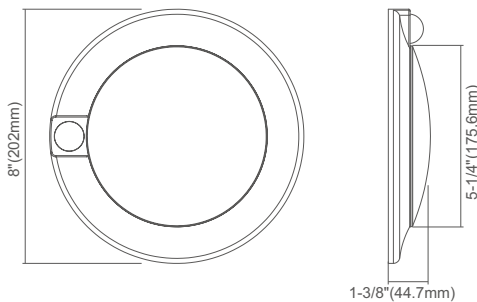
when walk into the reaction range



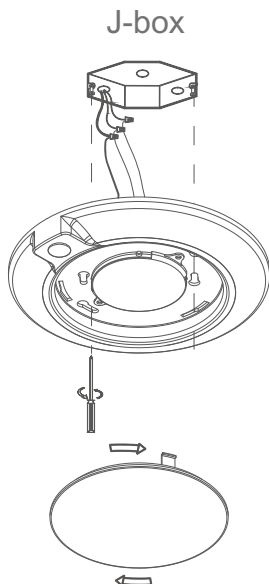
Automatically turn to standby mode when people walk out of the reaction range



DIMENSION



INSTALLATION



ORDERING&SPECIFICATION	
Model	AD114-6-5CCTYY
Watts	15W
Lumen	1000lm
ColorTemperature	Field selectable (2700K/3000K/3500K/4000K /5000K)
CRI	90Ra+ (80Ra Optional)
Input	AC120V,60Hz
Dimming	No
PowerFactor	>0.9
ApprovedLocation	Wet Location
Air Tight	Yes
OperatingTemp.	(-4 °F~104 °F)-20~40 °C
BeamAngel	120°

PACKAGE	
Weight.(g)	310g
Qty/CTN (pcs)	20pcs/CTN
Box Dimension	438*228*235mm
Gross Weight	4.9kg/CTN

Notes:
 * XX represents different CCT, 27 for 2700K;3 for 3000K; 35 for 3500K; 4 for 4000K; 5 for 5000K
 * YY represents different color finish, WH for white; BN for brushed nickel; BK for Black; BZ for Bronze.
 Example:AD114-6-5CCTWH

INCLUDED IN BOX

- Three Wire Nuts
- Two Screws

