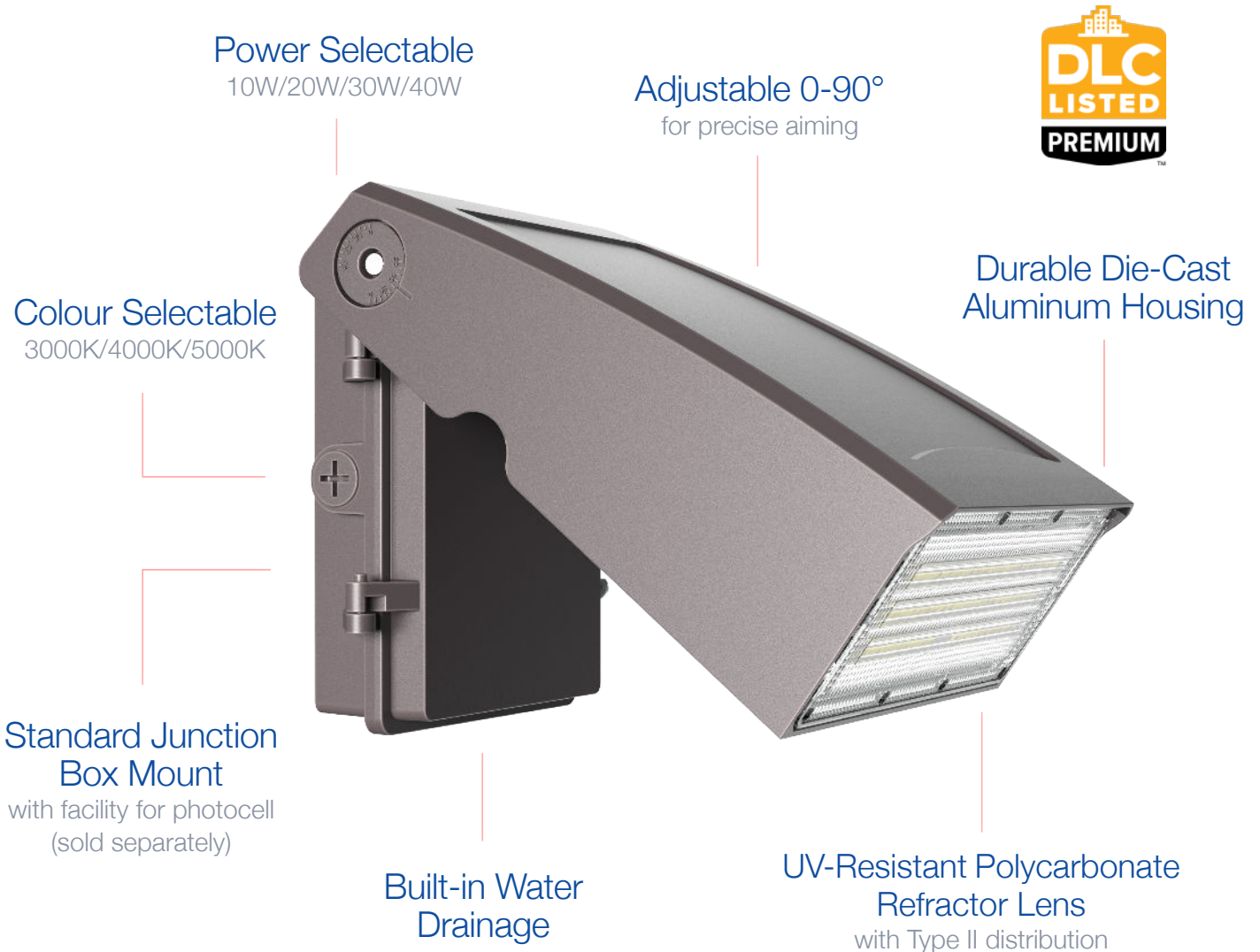


AWP04 Architectural Wall Pack

Power Selectable | 3CCT | 120-347V

Meet the successor to our AWP03 series Wall Packs, **now power and colour selectable!**
Ideal for building entrances, multi-use facilities, apartment buildings, institutions, schools, and more



Power Selectable
10W/20W/30W/40W

Adjustable 0-90°
for precise aiming



Colour Selectable
3000K/4000K/5000K

Durable Die-Cast
Aluminum Housing

Standard Junction
Box Mount
with facility for photocell
(sold separately)

Built-in Water
Drainage

UV-Resistant Polycarbonate
Refractor Lens
with Type II distribution

TECHNICAL DATA



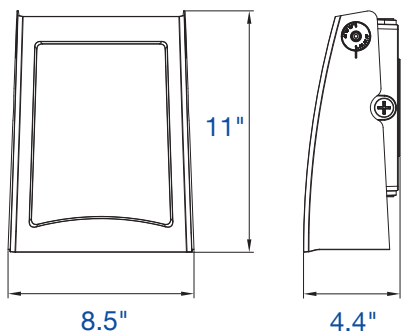
LIGHT SPECIFICATIONS

Lumens	5,059 lm
Efficacy	126.47 lm/W
CCT	3000K/4000K/5000K
CRI	72
Dimmable	0-10V
L70 Life	50,000 hrs
Warranty	10-year

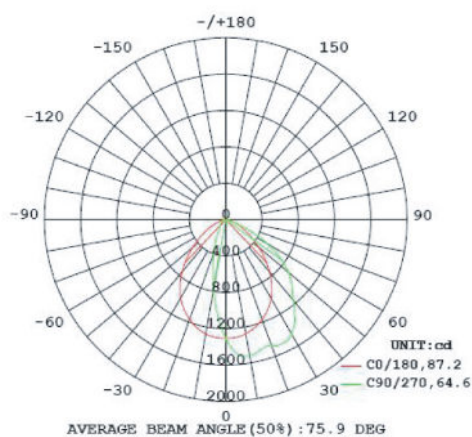
APPROVALS AND LISTINGS

cETL	5018387
DLC Premium	S-0W9LD6

DIMENSIONS



LUMINOUS INTENSITY DISTRIBUTION



ELECTRICAL

Wattage	10W/20W/30W/40W
Voltage	120-347V
Current	0.45A
Power Factor	0.9
THD	15%
Operating Temp	-30 to 45°C

CONSTRUCTION

Housing	Die-Cast Aluminum
Lens	Polycarbonate
Finish	Bronze
IP Rating	IP65

DIMENSIONS AND WEIGHTS

Fixture Weight	3.5 lbs
Fixture Dimensions	11 x 8.5 x 4.4 in
Carton Qty	1
Carton Weight	4.2 lbs
Carton Dimensions	13 x 9.6 x 5.9 in

ACCESSORIES (Sold Separately)

HD06VCRH	Photocell
HD06-TUBE	Tube Extension for HD06VCRH (required)
HB01DMS-C	Motion Sensor

HEAD OFFICE: 8 - 540 Jamieson Pkwy, Cambridge, ON, N3C 0G5 | orders@csc-led.com | (519) 880 - 9833