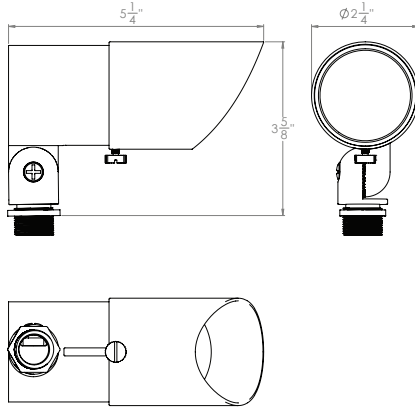


# HORNET ACCENT 12V

5611

# WAC

## LANDSCAPE LIGHTING



Fixture Type:

Catalog Number:

Project: \_\_\_\_\_

Location: \_\_\_\_\_

### PRODUCT DESCRIPTION

Landscape hornet accent luminaire. One fixture replaces all older halogen landscape accent lights

### FEATURES

- Continuously Adjustable Beam Angles. Indexed at 20°, 35°, 45°, 60°, 70°
- IP66 rated, Protected against high-pressure water jets
- Corrosion resistant die-cast brass
- Factory sealed water tight fixtures
- Constant output for 9V-15V input
- Can be used as an uplight or downlight
- 2700K or 3000K color temperature
- Mounting stake, 12' lead wire and direct burial gel-filled wire nuts included
- MLV dimmable with remote MLV dimmers

### SPECIFICATIONS

**Input:** 9-15VAC  
**Power:** 10.5W / 16VA  
**Brightness:** 820 lm  
**Beam Angle:** 20° to 70°  
**CRI:** 85  
**Rated Life:** 40,000 hours

### ORDERING NUMBER

		Color Temp	Finish
<b>5611</b>	12V	<b>27</b> 2700K Warm White <b>30</b> 3000K Pure White	<b>BBR</b> Bronze on Brass

**5611-30**\_\_\_\_\_

Example: **5611-30BBR**

wacighting.com	Headquarters, East Manufacturing Facility	South East Manufacturing Facility	Central Manufacturing Facility	West Manufacturing Facility
Phone (800) 526.2588	44 Harbor Park Drive	1600 Distribution Ct	1700 South J Elmer Freeway, Ste 100	1750 S Archibald Ave
Fax (800) 526.2585	Port Washington, NY 11050	Lithia Springs, GA 30122	Cedar Hill, TX 75104	Ontario, CA 91761








# HORNET ACCENT 12V

5611

# WAC

## LANDSCAPE LIGHTING

### Accessories

Additional Stake		<b>9000-ST9-BZ</b>	Bronze	Durable PVC stake
Surface Mount Flange/Stake		<b>5000-SCP-BBR</b>	Bronze on Brass	Includes three 7 inch threaded stainless steel stabilizing pins for ground mounting or surface mounts with four screws or over a junction box
Guardian Mount		<b>9000-SP9-BZ</b>	Stainless Steel	Heavy duty stainless steel spike to position fixture Formed from a single piece of metal
Gutter Mount Bracket		<b>5000-GM-BZ</b> <b>5000-GM-Bk</b>	Stainless Steel	Stainless Steel universal mounting bracket for gutter mounting fixture
Tree Mount Junction Box		<b>5000-TCP-BZ</b> <b>5000-TCP-BK</b>	Bronze on Aluminum Black on Aluminum	Bronze on Aluminum box with Stainless steel mounting screws. Two 1/2" NPT threaded holes
Extension Rods		<b>5000-X04-BBR</b> 4 in <b>5000-X08-BBR</b> 8 in <b>5000-X12-BBR</b> 12 in	<b>5000-X18-BBR</b> 18 in <b>5000-X24-BBR</b> 24 in	Extends distance between Accent light and Surface Mount Canopy, Stake, or Tree Mount box
Rod L-Coupler		<b>5000-LCO-BZ</b>	Bronze	

### Magnetic Transformers

Stainless Steel, 12-15V output, IP65 rated, UL 1838 listed  
See transformer spec sheet for details and its accessories

**9075-TRN-SS**  
75W Max

**9150-TRN-SS**  
150W Max

**9300-TRN-SS**  
300W Max

**9600-TRN-SS**  
600W Max



wacighting.com  
Phone (800) 526.2588  
Fax (800) 526.2585

Headquarters, East Manufacturing Facility  
44 Harbor Park Drive  
Port Washington, NY 11050

South East Manufacturing Facility  
1600 Distribution Ct  
Lithia Springs, GA 30122

Central Manufacturing Facility  
1700 South J Elmer Freeway, Ste 100  
Cedar Hill, TX 75104

West Manufacturing Facility  
1750 S Archibald Ave  
Ontario, CA 91761