

DUNE

FR30204BNG-BG

LARGE PENDANT

Dune's bohemian chic design showcases strands of soft sea glass combined with a Burnished Gold finish. The designs blend a sophisticated silhouette with organic elements inspired by sun and surf. Dune infuses any space with timeless, mesmerizing elegance.

DETAILS

FINISH:	Burnished Gold with Blue Sea Glass
MATERIAL:	Steel
GLASS:	Blue Sea Glass
SLOPE DEGREE:	90
DIMMABLE:	No

DIMENSIONS

WIDTH:	18"
HEIGHT:	20.5"
WEIGHT:	32lb

LIGHT SOURCE

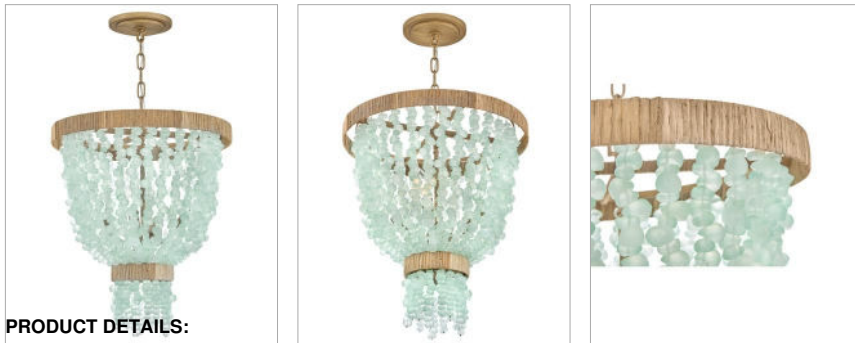
LIGHT SOURCE:	Socketed
WATTAGE:	4-5w Cand. LED, 60w Equiv.
VOLTAGE:	120v

MOUNTING

CANOPY:	6.5" Dia.
LEAD WIRE:	1 X 144"

SHIPPING

CARTON LENGTH:	20
CARTON WIDTH:	20
CARTON HEIGHT:	11
CARTON WEIGHT:	36.2



PRODUCT DETAILS:

- This item may be hung on a sloped ceiling
- Suitable for use in dry (indoor) locations as defined by NEC and CEC. Meets United States UL Underwriters Laboratories & CSA Canadian Standards Association Product Safety Standards.
- Classic, elegant lines and timeless details enhance a traditional space
- Luxurious gold finish with opulent sheen

HINKLEY

HINKLEY
33000 Pin Oak Parkway
Avon Lake, OH 44012

PHONE: (440) 653-5500
Toll Free: 1 (800) 446-5539

hinkley.com