

QUESTIONS OR CONCERNS CONTACT CANARM AT:
1-800-265-1833 (English) / 1-800-567-2513 (French)
Monday through Friday 8:00 AM to 5:00 PM E.S.T.



INSTRUCTIONS PERTAINING TO RISK OF FIRE OR INJURY TO PERSONS
READ ALL INSTRUCTIONS

IMPORTANT SAFETY INSTRUCTIONS

SAVE THESE INSTRUCTIONS

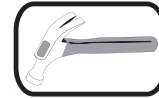
TOOLS AND MATERIALS REQUIRED:



Star-headed
Screwdriver



Pliers



Hammer



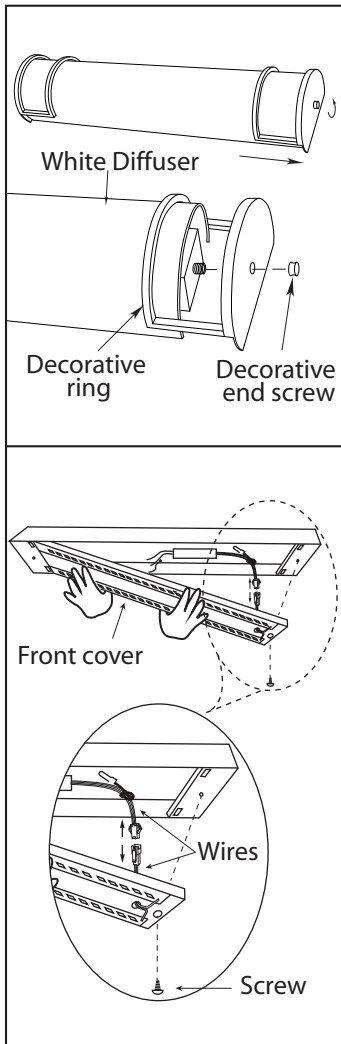
Wiring supplies
as required by
local electrical
code

SAFETY PRECAUTIONS:

1. TURN OFF ELECTRICAL POWER BEFORE STARTING INSTALLATION OF LIGHT FIXTURE.
2. THIS PRODUCT MUST BE INSTALLED IN ACCORDANCE WITH THE APPLICABLE INSTALLATION CODE BY A PERSON FAMILIAR WITH THE CONSTRUCTION AND OPERATION OF THE PRODUCT AND THE HAZARDS INVOLVED.
3. THIS FIXTURE IS DESIGNED FOR 120 VOLT CIRCUIT. IF UNSURE ABOUT WIRING, CONSULT AN ELECTRICIAN. **WARNING: DO NOT CONNECT FIXTURE TO DIMMER CIRCUIT.**
4. THIS FIXTURE MUST BE GROUNDED PROPERLY. CONNECT THE GROUND WIRES (BARE COPPER OR GREEN) TO THE AC SUPPLY GROUND WIRE (BARE COPPER OR GREEN) OR GROUND SCREW IN THE ELECTRICAL OUTLET BOX. IF GROUND WIRE IS NOT AVAILABLE IN YOUR AC SUPPLY WIRE SYSTEM, PLEASE CONSULT A QUALIFIED ELECTRICIAN BEFORE PROCEEDING THE ELECTRICAL CONNECTION.

NOTE: Product may not look exactly as shown in figures.

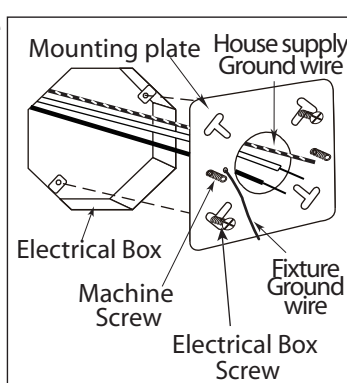
INSTALLATION:



1. Remove the screw on the both sides.

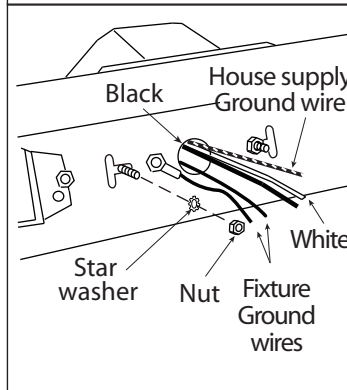
2. Slide the decorative ring from both sides. Remove the diffuser from the fixture.

3. Remove the front cover by loosening the screw. Disconnect the male and female wires from the front cover to the male and female wires in the back plate.



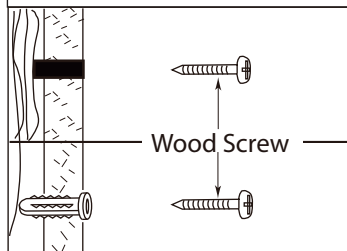
4. Remove knockouts (on the mounting plate) corresponded to the mounting screws on the electrical box.

Install the 2 machine screws to the mounting plate. Be sure the 2 machine screws are parallel to the floor. Pull wires from electrical box and tighten the mounting plate to the electrical box using the 2 screws supplied by the electrical box.



5. Tighten the back plate over the mounting plate by the star washers and nuts provided. Ensure the back plate is level to the floor. Additional support may be required for fixtures longer than 30". Position the fixture and add wood screws (one on each side) for the wooden studs or plastic wall anchor and wood screws for dry wall.

6. Connect the ground wires to the ground screw located near the centre knockout of the electrical box or the ground wire in the electrical box. Connect the black wire from the fixture to the black wire from the electrical box. Connect the white wire from the fixture to the white wire from the electrical box. Once wires are connected, carefully tuck wires and marretts into the electrical box.



Alternatively, an outlet box is not normally required when the electrical leads are entering the fixture from the back and supply wiring has a minimum of 90 deg. C temperature rating. Before installing always consult your local Electrical Safety Authority or qualified electrician if you are unfamiliar with local Electrical Standards.

7. Reverse the process of Step 3, 2, 1 to install the fixture.