


Questions or Concerns Contact At The Following Phone Numbers Before
Returning Product To The Store:

1-800-265-1833 (English) / 1-800-567-2513 (French)
Monday through Friday 8:00 AM to 5:00 PM E.S.T.





INSTRUCTIONS PERTAINING TO RISK OF FIRE OR INJURY
TO PERSONS READ ALL INSTRUCTIONS

IMPORTANT SAFETY INSTRUCTIONS

SAVE THESE INSTRUCTIONS

TOOLS AND MATERIALS REQUIRED:



Phillips
Screwdriver



Wire Cutters



Pliers

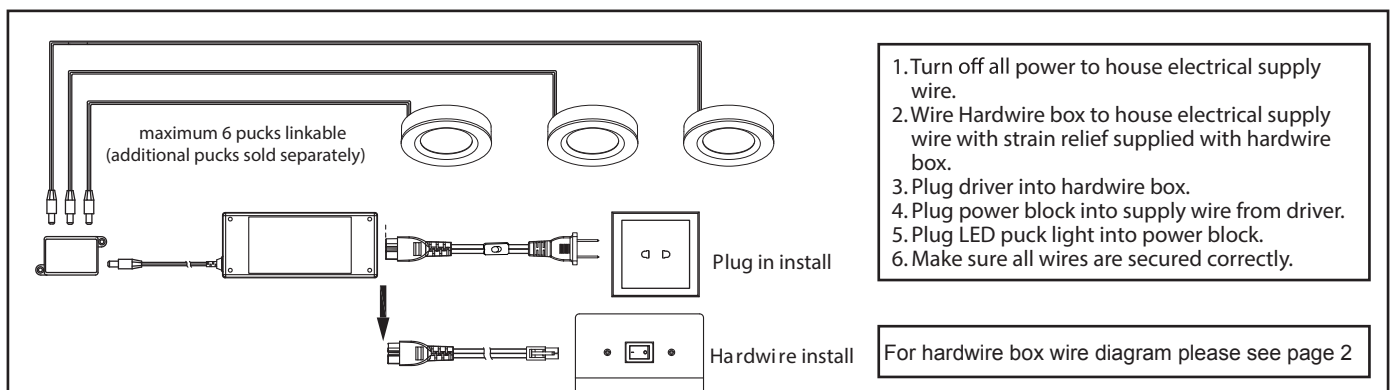


Wrench

Wiring supplies
as required by
local electrical
code

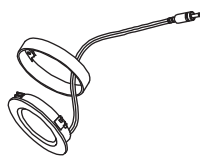
CAUTIONS:

1. Installation, Operating and Safety Instructions - Instructions for installation and use of this product are provided by the manufacturer.
2. To reduce the risk of fire, do not install in a compartment smaller than 12 inches by 12 inches by 12 inches".
3. For under cabinet or shelf mount only.



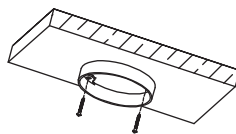
Surface Mount Installation

Step 1



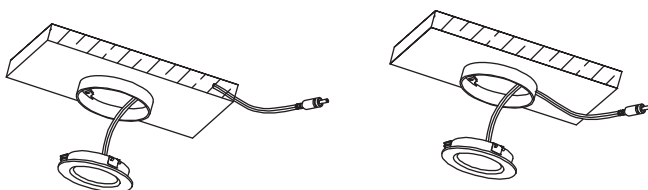
Using hands, separate outer shell from LED lamp.

Step 2



Using included hardware and a screw driver,
secure outer shell to cabinet surface.

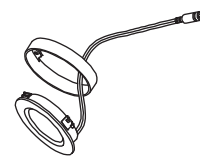
Step 3



Feed connecting cord through a pre-drilled hole in the cabinet surface
or through the cut-out of the outer shell. Secure LED lamp into outer shell.

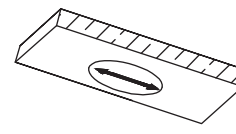
Recessed Installation

Step 1



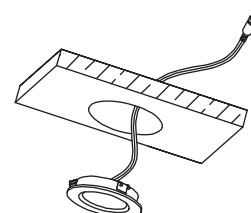
Using hands, separate outer shell from LED lamp.

Step 2



Cut out from the bottom of the cabinet a hole
using a 2.5" hole saw.

Step 3



Feed connecting cord through the hole in
cabinet and secure LED lamp.

Hardwire Box and HUB Installation Instruction (JUNCTION BOX SOLD SEPERATELY)

