

# LED DISK LIGHT

1/14



QUESTIONS OR CONCERNS CONTACT CANARM AT:  
 1-800-265-1833 (English) / 1-800-567-2513 (French)  
 Monday through Friday 8:00 AM to 5:00 PM E.S.T.

LED-SM6DL



"INSTRUCTIONS PERTAINING TO RISK OF FIRE OR INJURY TO PERSONS"  
 "READ ALL INSTRUCTIONS"  
**"IMPORTANT SAFETY INSTRUCTIONS"**  
**"SAVE THESE INSTRUCTIONS"**

**TOOLS AND MATERIALS REQUIRED:**

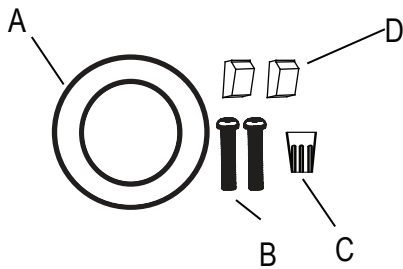


Wiring supplies as required by your local Provincial or State Electrical Code

**SAFETY PRECAUTIONS:**

- 1. TURN OFF ELECTRICAL POWER BEFORE STARTING INSTALLATION OF LIGHT FIXTURE.**
- 2. THIS PRODUCT MUST BE INSTALLED IN ACCORDANCE WITH THE APPLICABLE INSTALLATION CODE BY A PERSON FAMILIAR WITH THE CONSTRUCTION AND OPERATION OF THE PRODUCT AND THE HAZARDS INVOLVED.**
- 3. CAUTION – RISK OF FIRE. CONSULT A QUALIFIED ELECTRICIAN TO ENSURE CORRECT BRANCH CIRCUIT CONDUCTOR.**

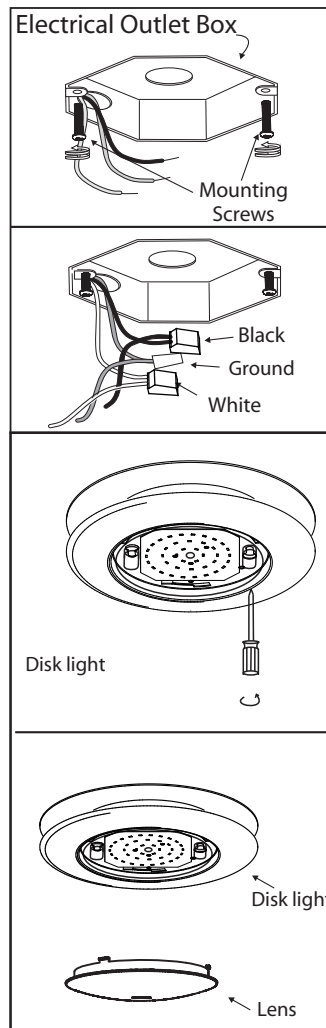
PART	DESCRIPTION	QTY
A	LED disk light	1
B	Mounting screws	2
C	Wire nut	1
D	Power connector	2



**FLUSH MOUNT**

This LED light is suitable to be dimmed by LEVITON# 6633, LEVITON # 6672 (1st choice), and 2nd option for LUTRON # CTCL-153PD (dimming may be adjustable by the level head at the side of the switch)

Max # of Lamps per 600W Dimmer: 5pcs



- 1.** Prior to installation, install mounting screws into the junction box. Do not drive screws completely to the end of the junction box.
- 2.** Connect supply wires to wires on fixture with wire nuts or push wires into Quick Connector. Connect white to white, black to black, and copper wire to copper wire as grounding connection.
- 3.** With the lens off of fixture, attach disk light to mounting screws, turn fixture clockwise to lock. Tighten screws to firmly hold the fixture in place.
- 4.** Complete the installation by twisting the lens on the disk light.