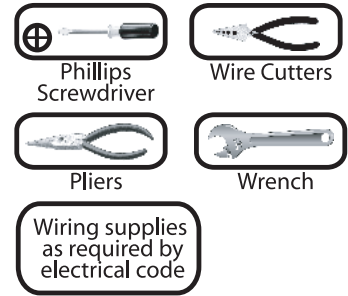


**QUESTIONS OR CONCERNS CONTACT CANARM AT:**

1-800-265-1833 (English) 1-800-567-2513 (French) 1-800-267-4427 (USA)  
Monday through Friday 8:00 AM to 5:00 PM E.S.T.

**TOOLS AND MATERIALS REQUIRED:**



"INSTRUCTIONS PERTAINING TO RISK OF FIRE OR INJURY TO PERSONS"  
"READ ALL INSTRUCTIONS"

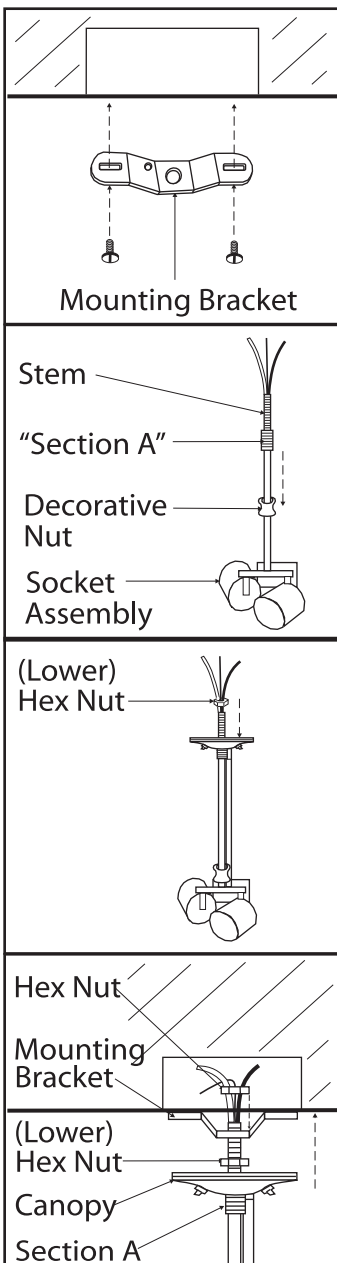
## "IMPORTANT SAFETY INSTRUCTIONS"

### "SAVE THESE INSTRUCTIONS"

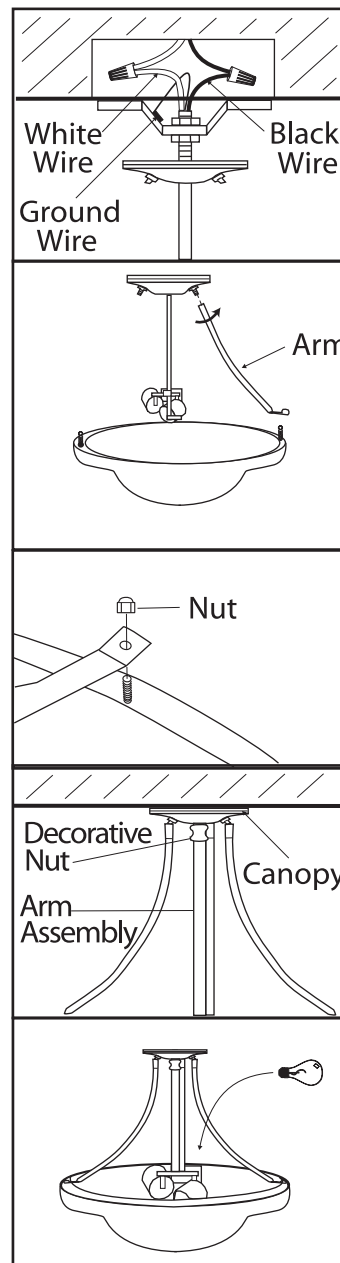
**SAFETY PRECAUTIONS:**

- 1. TURN OFF ELECTRICAL POWER BEFORE STARTING INSTALLATION OF LIGHT FIXTURE.**
  - 2. THIS PRODUCT MUST BE INSTALLED IN ACCORDANCE WITH THE APPLICABLE INSTALLATION CODE BY A PERSON FAMILIAR WITH THE CONSTRUCTION AND OPERATION OF THE PRODUCT AND THE HAZARDS INVOLVED.**
  - 3. CONNECT THE GROUND WIRE (BARE COPPER OR GREEN) FROM YOUR FIXTURE TO THE GROUND WIRE (BARE COPPER OR GREEN) OR GROUND SCREW IN THE ELECTRICAL OUTLET BOX.**
- NOTE: Product May Not Look Exactly As Shown In Figures.**

**INSTALLATION:**



- 1.** Assemble mounting bracket to electrical box using two electrical box screws (not included).
- 2.** Unthread decorative nut from socket assembly and slide down the stem.
- 3.** Slide arm assembly over socket assembly. Spin (lower) hex nut onto the stem approximately 1".
- 4.** Feed wires and stem through the center hole of the mounting bracket. Slide a hex nut over the wires and start tightening onto the stem until "Section A" lines up with the arm assembly canopy (when the canopy is flush to the ceiling). Lock in position by tightening the (lower) hex nut against the mounting bracket.



- 5.** Attach the black wire from the light fixture to the black wire in the electrical box. Attach the white wire from the light fixture to the white wire in the electrical box. Connect the copper ground wire from the light fixture to the ground screw on the mounting bracket.
- 6.** Screw the arms into the studs. position the arms in place.
- 7.** Tighten the arm onto the screw by nut. Repeat for other arms.
- 8.** Slide the arm assembly into position and lock in place by threading the decorative nut up against the arm assembly canopy.
- 9.** Install proper bulb type and wattage.