

LED Table Lamp

TL46615
INSTALLATION SHEET

START FROM HERE

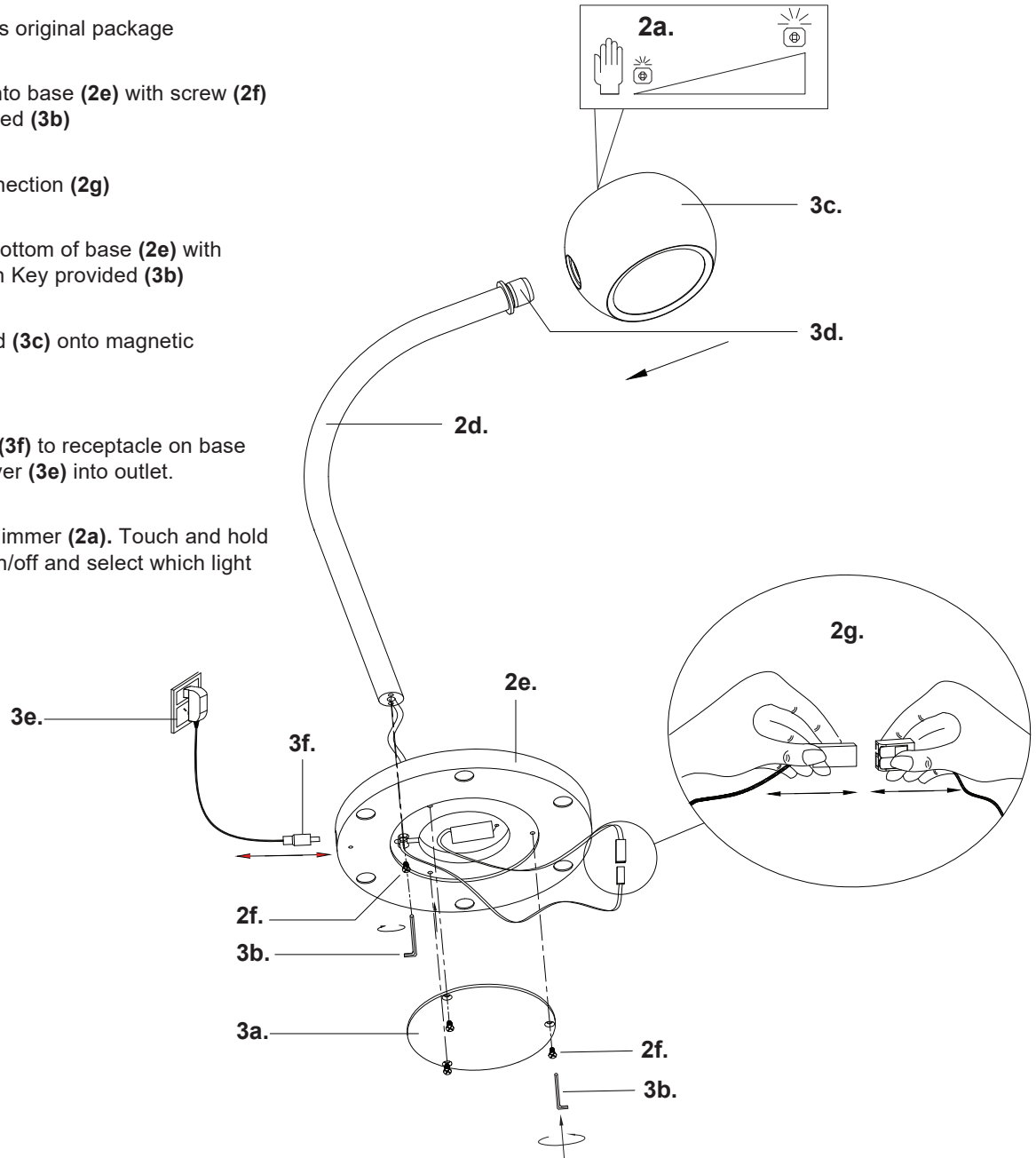
- Prepare everything in a clear area
- Wear gloves at all times during this installation
- Read instructions carefully before you start assembly
- Keep this installation sheet for future reference

Please Note:

- This Kuzco LED fixture comes with pre-wired LED module(s)
- Unless instructed, Do Not touch any part of the LED module(s) as any unnecessary contact with the module could cause permanent damage
- Touch Dimmer

Technical Support: 1-855-855-8926

- 1.** Remove fixture from its original package
- 2.** Lock fixture rod (2d) into base (2e) with screw (2f) using Allen Key provided (3b)
- 3.** Make low voltage connection (2g)
- 4.** Secure cover (3a) to bottom of base (2e) with screws (2f) using Allen Key provided (3b)
- 5.** Gently slide lamp head (3c) onto magnetic connector (3d)
- 6.** Connect Coaxial plug (3f) to receptacle on base (2e) and then plug driver (3e) into outlet.
- 7.** Use hand to activate dimmer (2a). Touch and hold to dim, touch to turn on/off and select which light comes on.



KUZCO

19054 28th Avenue Surrey, BC Canada V3Z 6M3
T: 604 538 7162 TF: 1-855 85 KUZCO F: 604 538 7196
W: kuzcolighting.com
20191230