

## ALFA Series

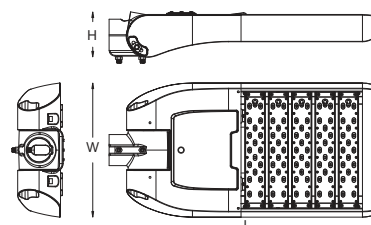


ALFA Series is an ideal solution for street lighting, available in multiple drive currents and optical distributions. Adding our optional motion sensor allows for even greater energy savings.

## FEATURES & BENEFITS

- Minimum 100µm corrosion resistant polyester powder coating. Certified according to 1000 hours salt spray testing standard ASTM B117 / ISO 9227:2012.
- Meets 3G vibration per ANSI C136.31-2010.
- Compact modular design allows for lower cost of construction.
- Human-centered modular design for easy installation, replacement and maintenance.
- One spigot for optional horizontal tenon mounting and pole top mounting. +/- 20 degree leveling adjustment for both mountings.
- Unmatched thermal management and proven lumen maintenance ratio.
- 15+ light distributions are available for virtually any application.
- Multiple smart lighting control options, e.g. motion sensor, photocell, DALI, 1-10V.
- Standard 5 or 10 years limited warranty are optional.

## DIMENSIONAL DRAWING



## TECHNICAL PARAMETERS

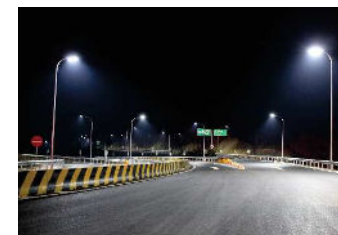
Power	30~320W
Input	120-277VAC or 220-240VAC or 347-480 VAC or 9-18VDC/18-32VDC
PF	>0.95
THD	<20% (120-277VAC)/<10% (220-240VAC)
L85	>60,000H
Operating Temperature	-40°C ~ +50°C
Typical Efficacy	100lm/W or 110lm/W or 120lm/W
ANSI CCT	3000K/4000K/5000K/5700K
Min CRI	70* or 80 or 85

IP Rating	IP67
SPD	10KA* or 20KA
Certificate	UL/ CUL/DLC/ LM79 / ENEC/CB/CE/ ErP/ RoHS/PSE /IK08
DALI	Optional
1-10V	Optional
Photocell	Optional
Smart Control	Optional
Optic (IESNA)	Type I, Type II, Type III, Type IV, Type V
Color Options	Grey/Black/Bronze/White

\* Standard

## APPLICATIONS

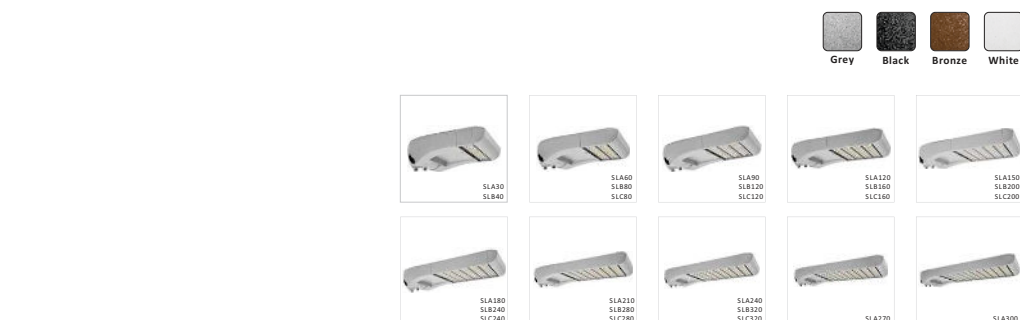
- Street lighting
- Roadway lighting
- Parking lot lighting
- Area lighting



China



Australia



LED Driver Compartment



Horizontal Tenon Mount



Pole Top Mount



LED Module

## ALFA Series

### BRIEF SPECIFICATIONS

Model No.	System Power	LED Modules	LEDs	EPA	Net Weight	Gross Weight	Dimensions (L x W x H)	Carton Dimensions (L x W x H)	Luminous Flux		Efficacy* (lm/W)
									3000K	4000K/5000K	
<b>SLA: 120-277VAC or 220-240VAC, 30W/module</b>											
SLA30	31.4W	1	18	0.46sq. ft.	6.46kg(14.24lbs)	7.46kg(16.45lbs)	463 x 345x 116(mm) 18.23" X 13.58" X 4.57"	535 x 425 x 170(mm) 21.06" X 16.73" X 6.69"	3021 lm	3394 lm	108
SLA60	60.4W	2	36	0.5sq. ft.	7.09kg(15.63lbs)	8.16kg(17.99lbs)	523 x 345 x 116(mm) 20.59" X 13.58" X 4.57"	595 x 425 x 170(mm) 23.43" X 16.73" X 6.69"	6143 lm	6902 lm	114
SLA90	87.0W	3	54	0.54sq. ft.	8.22kg(18.12lbs)	9.35kg(20.61lbs)	583 x 345 x 116(mm) 22.95" X 13.58" X 4.57"	655 x 425 x 170(mm) 25.79" X 16.73" X 6.69"	8884 lm	9982 lm	115
SLA120	111.7W	4	72	0.59sq. ft.	8.88kg(19.58lbs)	10.05kg(22.16lbs)	643 x 345 x 116(mm) 25.31" X 13.58" X 4.57"	715 x 425 x 170(mm) 28.15" X 16.73" X 6.69"	11906 lm	13377 lm	120
SLA150	140.8W	5	90	0.63sq. ft.	9.47kg(20.88lbs)	10.73kg(23.66lbs)	703 x 345 x 116(mm) 27.68" X 13.58" X 4.57"	775 x 425 x 170(mm) 30.51" X 16.73" X 6.69"	14838 lm	16672 lm	118
SLA180	171.9W	6	108	0.67sq. ft.	10.83kg(23.88lbs)	12.15kg(26.79lbs)	763 x 345 x 116(mm) 30.04" X 13.58" X 4.57"	835 x 425 x 170(mm) 32.87" X 16.73" X 6.69"	17949 lm	20168 lm	117
SLA210	201.4W	7	126	0.72sq. ft.	11.47kg(25.29lbs)	12.84kg(28.31lbs)	823 x 345 x 116(mm) 32.40" X 13.58" X 4.57"	895 x 425 x 170(mm) 35.24" X 16.73" X 6.69"	20875 lm	23455 lm	116
SLA240	227.7W	8	144	0.76sq. ft.	12.49kg(27.54lbs)	13.91kg(30.67lbs)	883 x 345 x 116(mm) 34.76" X 13.58" X 4.57"	955 x 425 x 170(mm) 37.60" X 16.73" X 6.69"	23721 lm	26653 lm	117
SLA270	253.9W	9	162	0.8sq. ft.	13.12kg(28.92lbs)	14.64kg(32.67lbs)	943 x 345 x 116(mm) 37.13" X 13.58" X 4.57"	1015 x 425 x 170(mm) 39.96" X 16.73" X 6.69"	26551 lm	29832 lm	118
SLA300	280.9W	10	180	0.84sq. ft.	13.88kg(30.60lbs)	15.44kg(34.04lbs)	1033 x 345 x 116(mm) 40.67" X 13.58" X 4.57"	1075 x 425 x 170(mm) 42.32" X 16.73" X 6.69"	29553 lm	33206 lm	118
<b>SLB: 120-277VAC or 220-240VAC, 40W/module</b>											
SLB40	40.3W	1	18	0.46sq. ft.	6.46kg(14.24lbs)	7.46kg(16.45lbs)	463 x 345x 116(mm) 18.23" X 13.58" X 4.57"	535 x 425 x 170(mm) 21.06" X 16.73" X 6.69"	3691 lm	4147 lm	103
SLB80	77.0W	2	36	0.5sq. ft.	7.09kg(15.63lbs)	8.16kg(17.99lbs)	523 x 345 x 116(mm) 20.59" X 13.58" X 4.57"	595 x 425 x 170(mm) 23.43" X 16.73" X 6.69"	7262 lm	8160 lm	106
SLB120	115.4W	3	54	0.54sq. ft.	8.22kg(18.12lbs)	9.35kg(20.61lbs)	583 x 345 x 116(mm) 22.95" X 13.58" X 4.57"	655 x 425 x 170(mm) 25.79" X 16.73" X 6.69"	10970 lm	12326 lm	107
SLB160	151.6W	4	72	0.59sq. ft.	8.88kg(19.58lbs)	10.05kg(22.16lbs)	643 x 345 x 116(mm) 25.31" X 13.58" X 4.57"	715 x 425 x 170(mm) 28.15" X 16.73" X 6.69"	14556 lm	16355 lm	108
SLB200	191.7W	5	90	0.63sq. ft.	10kg(20.05lbs)	11kg(24.25lbs)	703 x 345 x 116(mm) 27.68" X 13.58" X 4.57"	775 x 425 x 170(mm) 30.51" X 16.73" X 6.69"	18117 lm	20356 lm	106
SLB240	229.0W	6	108	0.67sq. ft.	10.83kg(23.88lbs)	12.15kg(26.79lbs)	763 x 345 x 116(mm) 30.04" X 13.58" X 4.57"	835 x 425 x 170(mm) 32.87" X 16.73" X 6.69"	21771 lm	24462 lm	107
SLB280	268.3W	7	126	0.72sq. ft.	11.47kg(25.29lbs)	12.84kg(28.31lbs)	823 x 345 x 116(mm) 32.40" X 13.58" X 4.57"	895 x 425 x 170(mm) 35.24" X 16.73" X 6.69"	25506 lm	28658 lm	107
SLB320	304.9W	8	144	0.76sq. ft.	12.49kg(27.54lbs)	13.91kg(30.67lbs)	883 x 345 x 116(mm) 34.76" X 13.58" X 4.57"	955 x 425 x 170(mm) 37.60" X 16.73" X 6.69"	29096 lm	32692 lm	107
<b>SLC: 347-480VAC, 40W/module</b>											
SLC80	77.0W	2	36	0.5sq. ft.	7.09kg(15.63lbs)	8.16kg(17.99lbs)	523 x 345 x 116(mm) 20.59" X 13.58" X 4.57"	595 x 425 x 170(mm) 23.43" X 16.73" X 6.69"	7262 lm	8160 lm	106
SLC120	115.4W	3	54	0.54sq. ft.	8.22kg(18.12lbs)	9.35kg(20.61lbs)	583 x 345 x 116(mm) 22.95" X 13.58" X 4.57"	655 x 425 x 170(mm) 25.79" X 16.73" X 6.69"	10970 lm	12326 lm	107
SLC160	151.6W	4	72	0.59sq. ft.	8.88kg(19.58lbs)	10.05kg(22.16lbs)	643 x 345 x 116(mm) 25.31" X 13.58" X 4.57"	715 x 425 x 170(mm) 28.15" X 16.73" X 6.69"	14556 lm	16355 lm	108
SLC200	191.7W	5	90	0.63sq. ft.	10kg(20.05lbs)	11kg(24.25lbs)	703 x 345 x 116(mm) 27.68" X 13.58" X 4.57"	775 x 425 x 170(mm) 30.51" X 16.73" X 6.69"	18117 lm	20356 lm	106
SLC240	229.0W	6	108	0.67sq. ft.	10.83kg(23.88lbs)	12.15kg(26.79lbs)	763 x 345 x 116(mm) 30.04" X 13.58" X 4.57"	835 x 425 x 170(mm) 32.87" X 16.73" X 6.69"	21771 lm	24462 lm	107
SLC280	268.3W	7	126	0.72sq. ft.	11.47kg(25.29lbs)	12.84kg(28.31lbs)	823 x 345 x 116(mm) 32.40" X 13.58" X 4.57"	895 x 425 x 170(mm) 35.24" X 16.73" X 6.69"	25506 lm	28658 lm	107
SLC320	304.9W	8	144	0.76sq. ft.	12.49kg(27.54lbs)	13.91kg(30.67lbs)	883 x 345 x 116(mm) 34.76" X 13.58" X 4.57"	955 x 425 x 170(mm) 37.60" X 16.73" X 6.69"	29096 lm	32692 lm	107
<b>SLD: 9-18VDC or 18-32VDC</b>											
SLD20	20.1W	1	18	0.46sq. ft.	5.95kg(13.12lbs)	6.95kg(15.32lbs)	463 x 345x 116(mm) 18.23" X 13.58" X 4.57"	535 x 425 x 170(mm) 21.06" X 16.73" X 6.69"	1922 lm	2160 lm	108
SLD30	31.4W								3021 lm	3394 lm	109
SLD40	40.3W								3691 lm	4147 lm	103
SLD60	60.4W	2	36	0.50sq. ft.	6.58kg(14.51lbs)	7.65kg(16.87lbs)	523 x 345 x 116(mm) 20.59" X 13.58" X 4.57"	595 x 425 x 170(mm) 23.43" X 16.73" X 6.69"	6143 lm	6902 lm	114
SLD80	77.0W								7262 lm	8160 lm	106
SLD90	87.0W	3	54	0.54sq. ft.	7.40kg(16.31lbs)	8.53kg(18.81lbs)	583 x 345 x 116(mm) 22.95" X 13.58" X 4.57"	655 x 425 x 170(mm) 25.79" X 16.73" X 6.69"	8884 lm	9982 lm	115
SLD120	115.4W								10970 lm	12326 lm	107

\* CCT 4000K/5000K/5700K

### ORDERING INFORMATION

MODEL (Nominal Power)				OPTIC LENS	CCT (ANSI)	OPTIONAL COLOR	LIGHTING CONTROL	ACCESSORY INFO
SLA30 30W	SLB40 40W	SLC80* 80W	SLD20** 20W	T1M Type I Medium	30K 3045	GR*** Grey (RAL:7004)	00 Not required	Adaptor Bracket
SLA60 60W	SLB80 80W	SLC120* 120W	SLD30** 30W	T2M Type II Medium	±175K		01 Photocell	Bird Spike
SLA90 90W	SLB120 120W	SLC160* 160W	SLD40** 40W	T3M Type III Medium	40K*** 3985	BK Black (RAL:9011)	02 Motion Sensor	3/5/7-pin NEMA Receptacle
SLA120 120W	SLB160 160W	SLC200* 200W	SLD60** 60W	T3L Type III Long	±275K		03 Photocell + Motion Sensor	20KA Surge Protection Device
SLA150 150W	SLB200 200W	SLC240* 240W	SLD80** 80W	T4S Type IV Short	50K*** 5028	BZ Bronze (RAL:8014)		
SLA180 180W	SLB240 240W	SLC280* 280W	SLD90** 90W	TSU Average beam angle 10°	±283K	WH White (RAL:9010)		Back Light Shield
SLA210 210W	SLB280 280W	SLC320* 320W	SLD120** 120W	TSV Average beam angle 25°	57K 5665		04 DALI	Safety Cable
SLA240 240W	SLB320 320W			TSW Average beam angle 40°	±355K		05 1-10V dimming	
SLA270 270W				TSS Average beam angle 60°				
SLA300 300W				TSM Average beam angle 90°				
				TSL Average beam angle 120°				
				TSD Diffuser				

\* DALI & Motion sensor unavailable

\*\* 1-10V dimming & DALI & Motion sensor unavailable

\*\*\* In Stock

- Example 1: SLA30-T1M-50K-GR-03
- Example 2: SLB40-T2M-50K-BK-02
- Example 3: SLC80-T3L-50K-BZ-05
- Example 4: SLD40-T5S-50K-WH-00