

GAMA-U & GAMA-UR Series



Combined with a yoke mount, GAMA-U & GAMA-UR Series are versatile LED lighting solutions that provide highly-optimized target illumination performance and the flexibility needed for demanding applications.



GAMA-U



GAMA-UR



GAMA-U

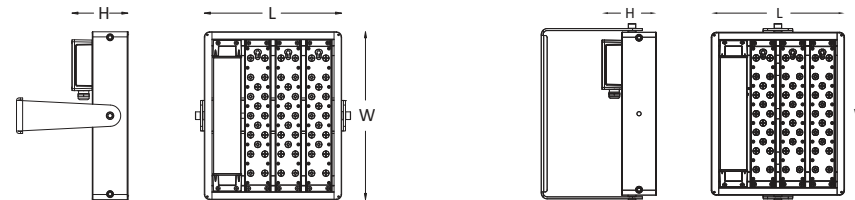


GAMA-UR

FEATURES & BENEFITS

- Minimum 100µm corrosion resistant polyester powder coating. Certified according to 1000 hours salt spray testing standard ASTM B117 / ISO 9227:2012.
- Human centered modular design for easy installation, replacement and maintenance.
- Unmatched thermal management and proven lumen maintenance ratio.
- Improved illumination performance and excellent optics control.
- 15+ light distributions are available for virtually any application.
- Adjustable yoke mounting bracket provides +/-75° rotation.
- Multiple smart lighting control options, e.g. motion sensor, photocell, DALI, 1-10V.
- Standard 5 or 10 years limited warranty are optional.

DIMENSIONAL DRAWING



GAMA-U

GAMA-UR

TECHNICAL PARAMETERS

Power	30-320W
Input	120-277VAC or 220-240VAC or 347-480 VAC
PF	>0.95
THD	<20% (120-277VAC)/<10% (220-240VAC)
L85	>60,000H
Operating Temperature	-40°C ~ +50°C
Typical Efficacy	100lm/W or 110lm/W or 120lm/W
ANSI CCT	3000K/4000K/5000K/5700K
Min CRI	70* or 80 or 85

* Standard

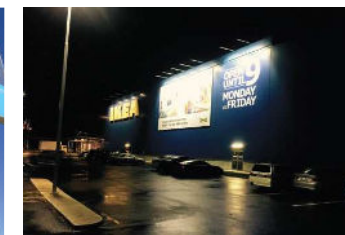
IP Rating	IP67
SPD	Optional
Certificate	UL/CUL/DLC/LM79/ENEC/CB/CE/ErP/RoHS/IK08
DALI	Optional
0-10V	Optional
Photocell	Optional
Smart Control	Optional
Optic (IESNA)	Type I, Type II, III, Type IV, Type V
Color Options	Black/Grey/Bronze/White

APPLICATIONS

- Architecture lighting
- Factory & Warehouse lighting
- Billboard lighting
- Auto dealership lighting
- Area lighting



Australia



Australia

GAMA-U & GAMA-UR Series

ORDERING INFORMATION

GAMA-U

MODEL (Nominal Power)			MOUNTING	OPTIC LENS	CCT (ANSI)	OPTIONAL COLOR	LIGHTING CONTROL	ACCESSORY INFO
FLA30 30W	FLB40 40W	FLC80* 80W	U	T1M Type I Medium	30K 3045	BK** Black (RAL:9011)	00 Not required	Bird Spike
FLA60 60W	FLB80 80W	FLC120* 120W		T2M Type II Medium	±175K		01 Photocell	10KA/20KA Surge Protection Device
FLA90 90W	FLB120 120W	FLC160* 160W		T3M Type III Medium	40K** 3985	GR Grey (RAL:7004)	02 Motion Sensor	Back Light Shield
FLA120 120W	FLB160 160W	FLC200* 200W		T3L Type III Long	±275K		03 Photocell + Motion Sensor	Safety Cable
FLA150 150W	FLB200 200W	FLC240* 240W		T4S Type IV Short	50K** 5028	BZ Bronze (RAL:8014)	04 DALI	
FLA180 180W	FLB240 240W	FLC280* 280W		T5U Average beam angle 10°	±283K	WH White (RAL:9010)	05 1-10V dimming	
FLA210 210W	FLB280 280W	FLC320* 320W		T5V Average beam angle 25°	5665			
FLA240 240W	FLB320 320W			T5W Average beam angle 40°	±355K			
FLA270 270W				T5S Average beam angle 60°				
FLA300 300W				T5M Average beam angle 90°				
				T5L Average beam angle 120°				
				T5D Diffuser				

* DALI & Motion sensor unavailable

** In Stock

- Example 1: FLA30-U-T1M-50K-GR-03
- Example 2: FLB40-U-T5M-50K-BK-02
- Example 3: FLC80-U-T3L-50K-BZ-05

GAMA-UR

MODEL (Nominal Power)			MOUNTING	OPTIC LENS	CCT (ANSI)	OPTIONAL COLOR	LIGHTING CONTROL	ACCESSORY INFO
FLA30 30W	FLB40 40W	FLC80* 80W	UR	T1M Type I Medium	30K 3045	BK** Black (RAL:9011)	00 Not required	Bird Spike
FLA60 60W	FLB80 80W	FLC120* 120W		T2M Type II Medium	±175K		01 Photocell	10KA/20KA Surge Protection Device
FLA90 90W	FLB120 120W	FLC160* 160W		T3M Type III Medium	40K** 3985	GR Grey (RAL:7004)	02 Motion Sensor	Back Light Shield
FLA120 120W	FLB160 160W	FLC200* 200W		T3L Type III Long	±275K		03 Photocell + Motion Sensor	Safety Cable
FLA150 150W	FLB200 200W	FLC240* 240W		T4S Type IV Short	50K** 5028	BZ Bronze (RAL:8014)	04 DALI	
FLA180 180W	FLB240 240W			T5U Average beam angle 10°	±283K	WH White (RAL:9010)	05 1-10V dimming	
				T5V Average beam angle 25°	5665			
				T5W Average beam angle 40°	±355K			
				T5S Average beam angle 60°				
				T5M Average beam angle 90°				
				T5L Average beam angle 120°				
				T5D Diffuser				

* DALI & Motion sensor unavailable

** In Stock

- Example 1: FLA30-UR-T1M-50K-GR-03
- Example 2: FLB40-UR-T5M-50K-BK-02
- Example 3: FLC80-UR-T3L-50K-BZ-05